

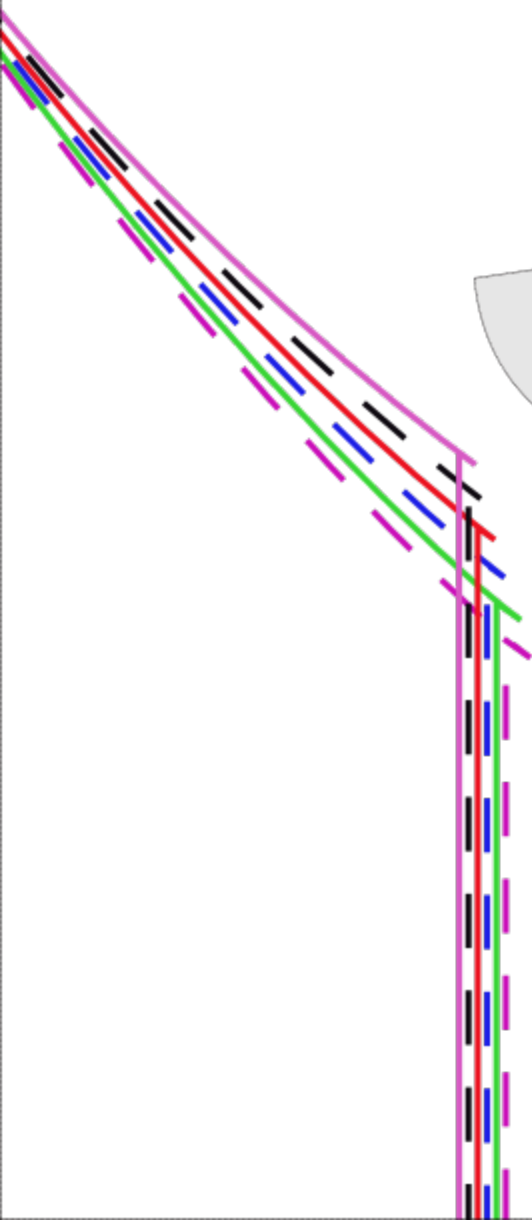
The diagram shows a technical drawing of a test carrier. It features several vertical lines: a solid green line on the left, a dashed blue line, a solid red line, a dashed black line, and a solid purple line on the right. At the top, these lines converge towards a dashed magenta line. A large, light gray arrow points upwards from the bottom center. A white rectangular box with a black border is positioned in the upper right area, containing the text 'carré test' and '5cm X 5cm'.

*carré test*  
*5cm X 5cm*



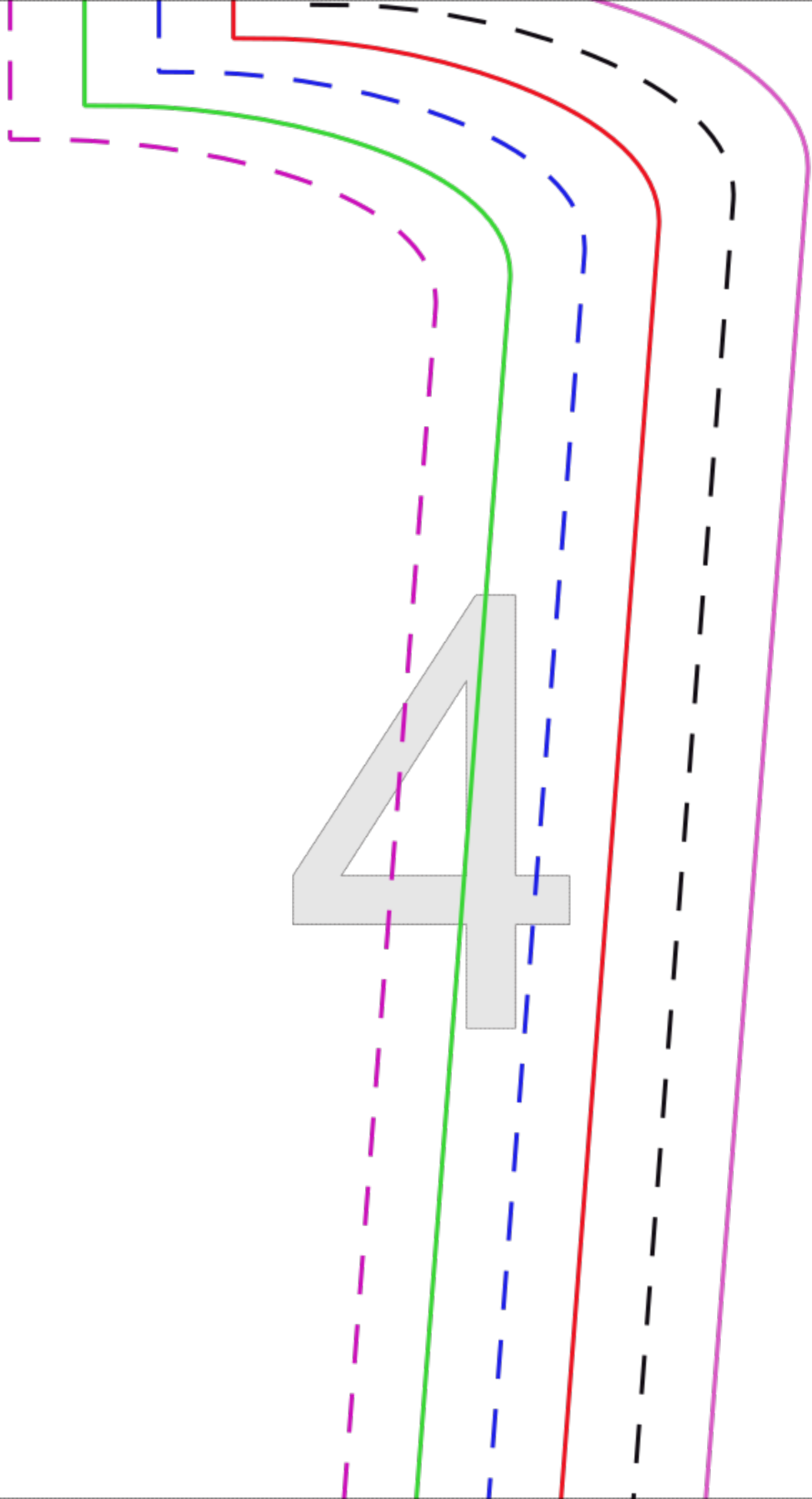
*Anton*

*Devant*



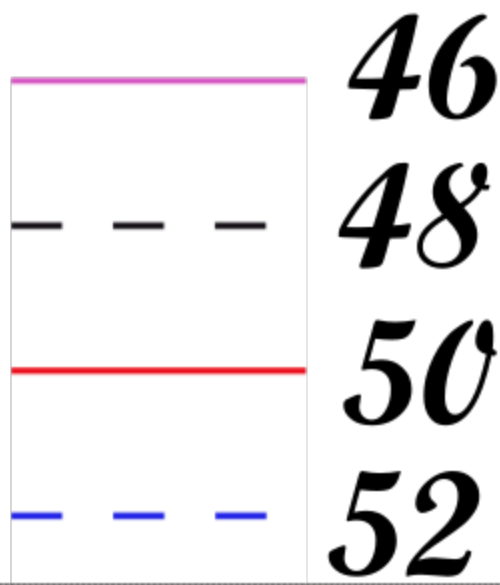
*Pli*

4

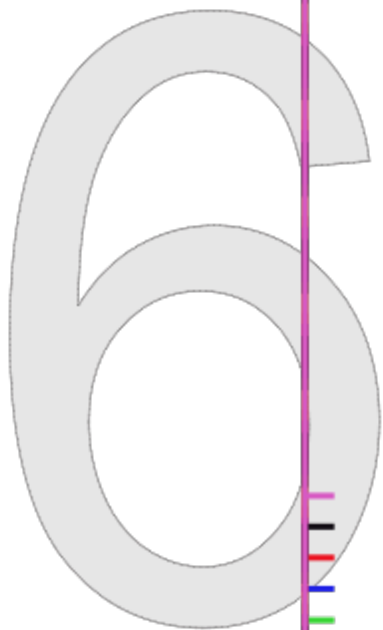


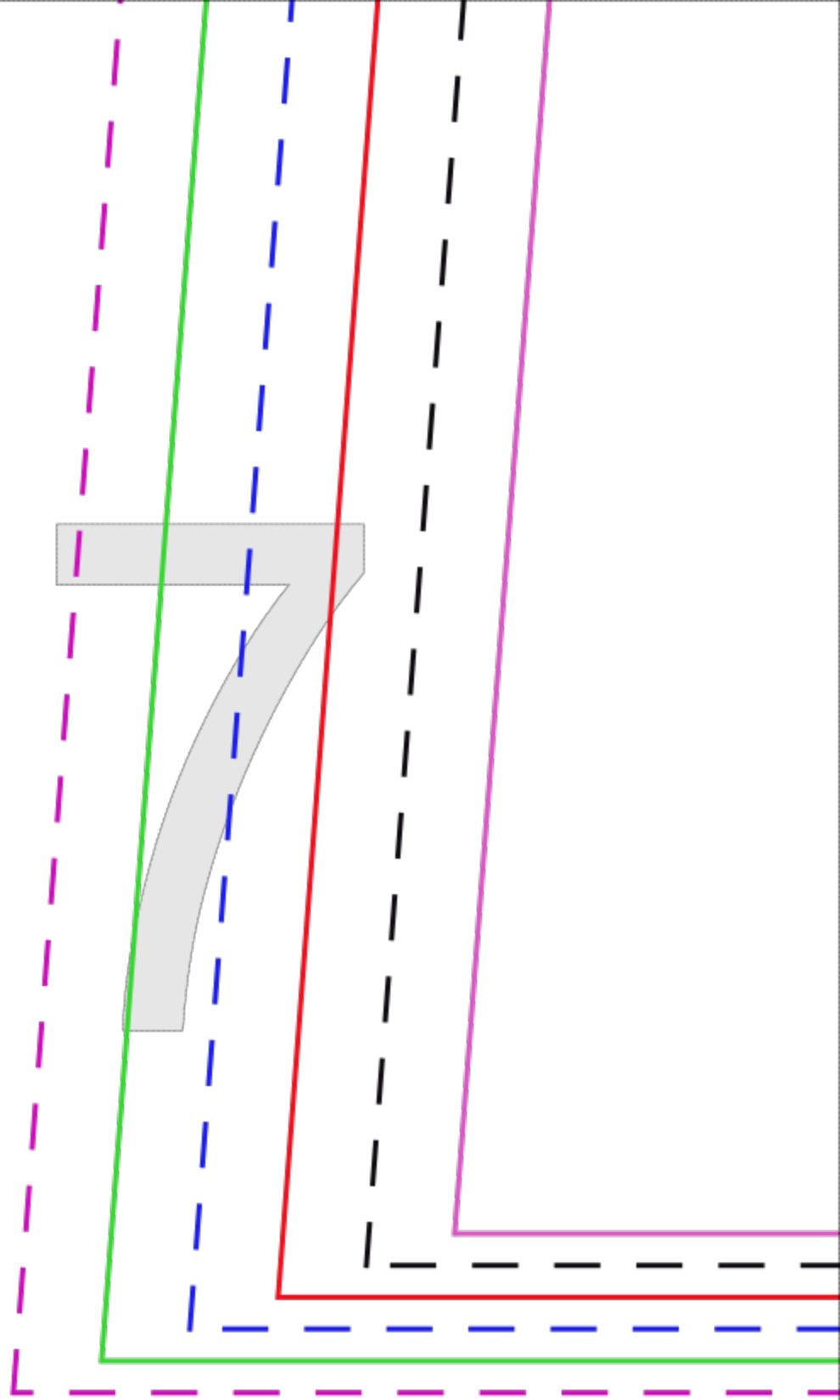
*X1 au pli*

5



*pli*







**54**  
**56**

